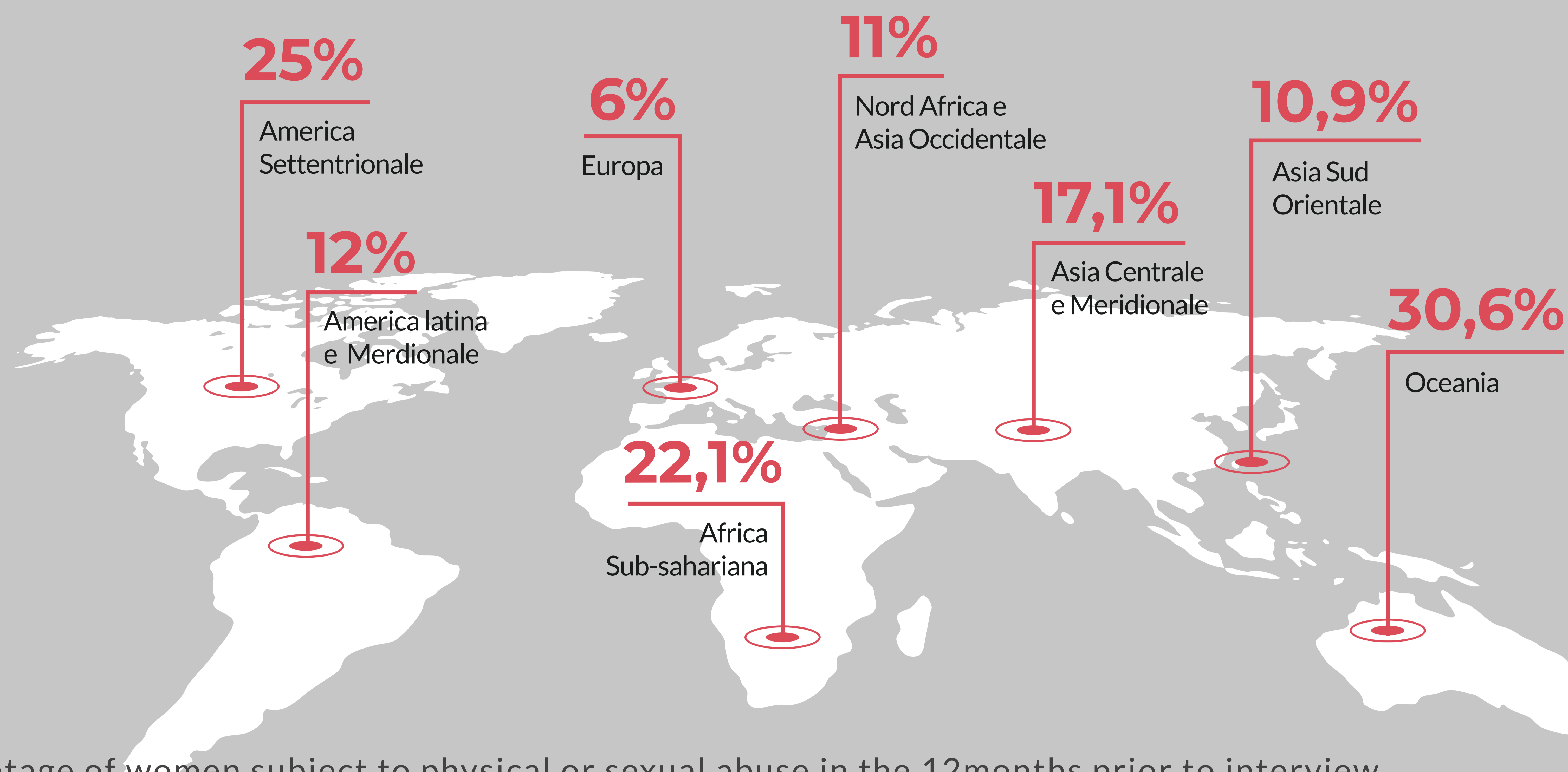




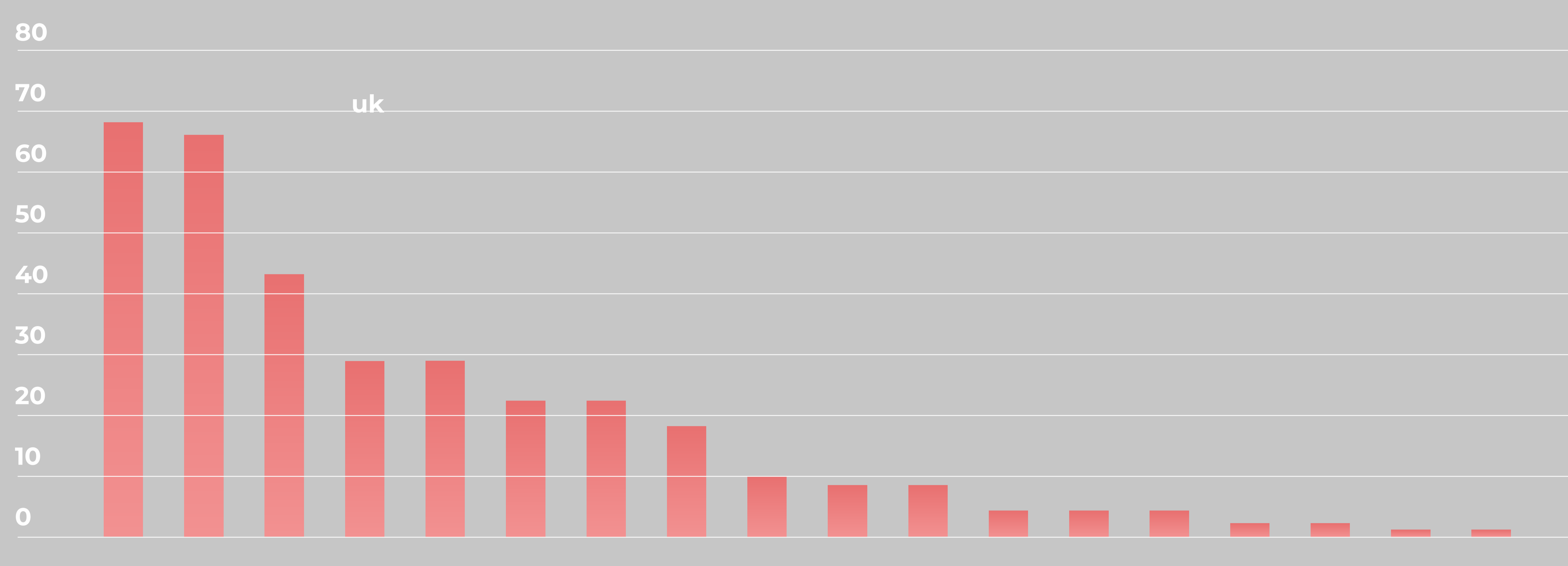
LILITH

Women abuse monitoring and intervention system.



Percentage of women subject to physical or sexual abuse in the 12 months prior to interview.

N° of sexual abuses per 100.000 residents, different years after 2010



* Fonte: UN - Department of Economic and Social Affairs
** Fonte: EUROSTAT ed altre

The **REAL** numbers are **WAY HIGHER** since on world average **ONLY 1** out of 10 assaults is reported.

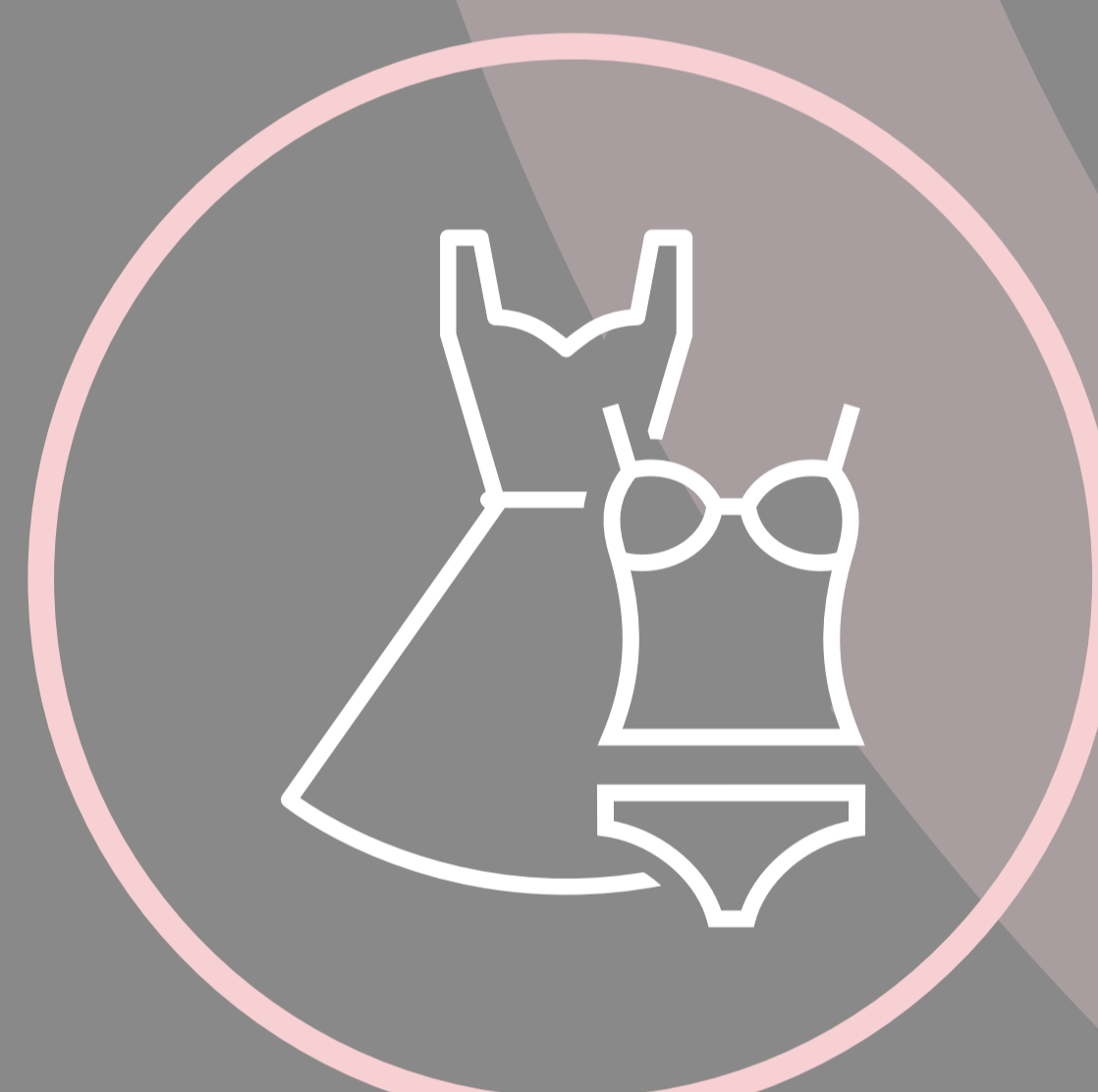


Users need

Safety, protection and surveillance for women, granting quick intervention in case of violence or abuse.

Solution

Our system is made of a clothing line made of smart fabrics that communicate with a mobile app and web platform.



Flexible sensors integrated in the fabric collect informations on position, acceleration, pressure, capacity and resistance sending them to the app.



The app processes the data verifying consistency with blows, falls and generic violence, if positive an alarm is activated, alerting some selected contacts with informations and geolocalisation of the user.

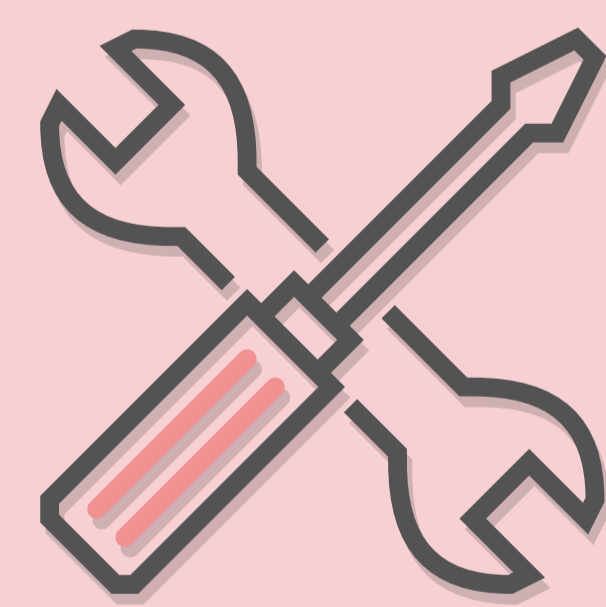


Web platform communicates in real time with the app and devices recording all the data and informations.

The devices, (IoT, Android, Windows) using the app, communicate with one another creating a mesh web distributing data at all the nodes so that the system will not fail if a device fails.

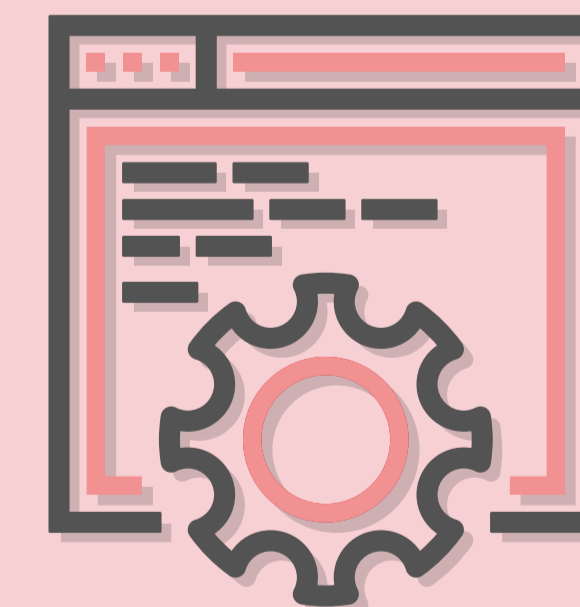


TECHNOLOGY



HARDWARE

Sensors and smart fabric for underwear + microelectronic



SOFTWARE

Blockchain protocols with automatized CO function

INTELLECTUAL PROTECTION

No patent

STATE OF ART

Hardware



Software



Web Platform



App



REFERENCE MARKET

B2C on a large scale

Appeal

